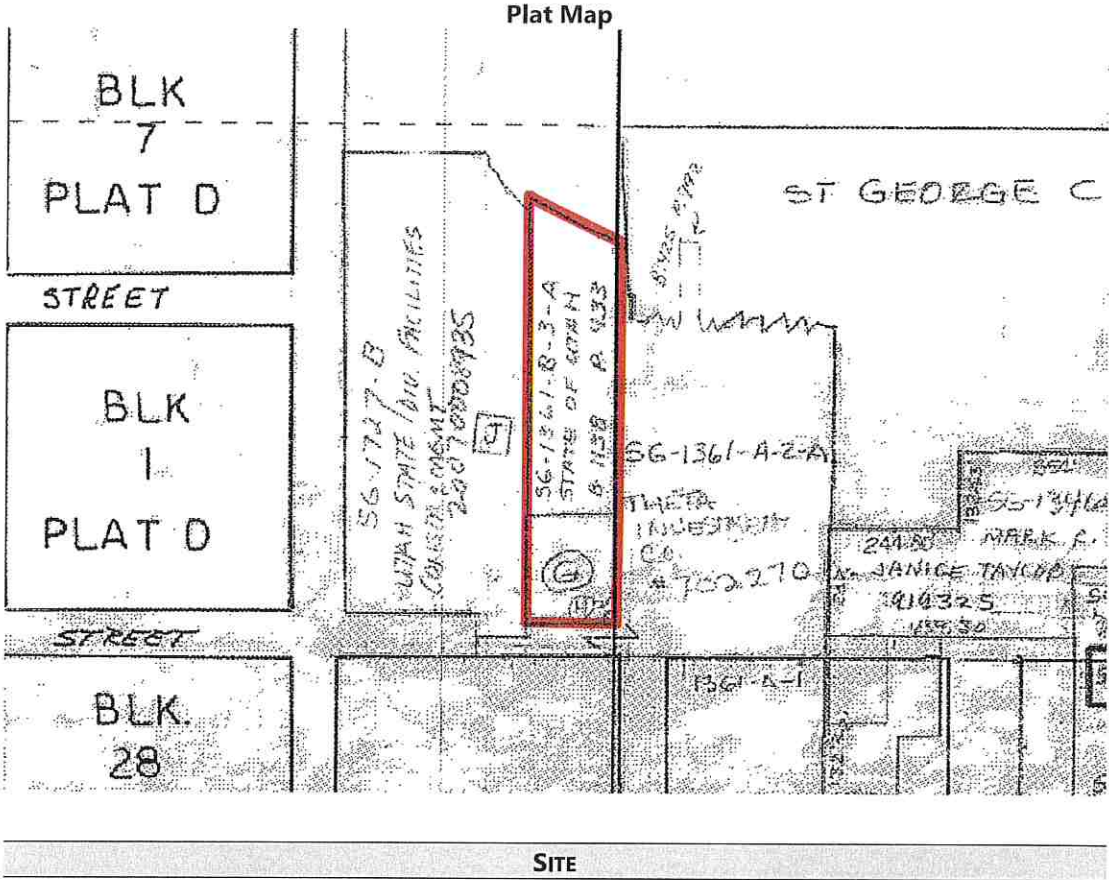


SITE DESCRIPTION



Location: 251 North 200 East
St. George, Washington County, Utah

Current Use of the Property: Juvenile Justice Center (Office)

Adjoining Uses:
North –Red Hill
East –Retail Storage Yard
South –Retail Storage Yard
West –Offices

Site Size:
SG-1743-C: 0.74 acres; 32,234 square feet
SG-1361-B-A: 1.98 acres; 86,249 square feet
SG-1743-E: 0.01 acres; 436 square feet
Total: 2.73 acres; 118,919 square feet
Usable: 0.80 acres; 34,848 square feet
The front two parcels and a small portion of the rear parcel are usable. The remaining portion of parcel SG-1361-B-3-A is steep hillside and not considered usable.

Shape: Rectangular

Aerial Photo

