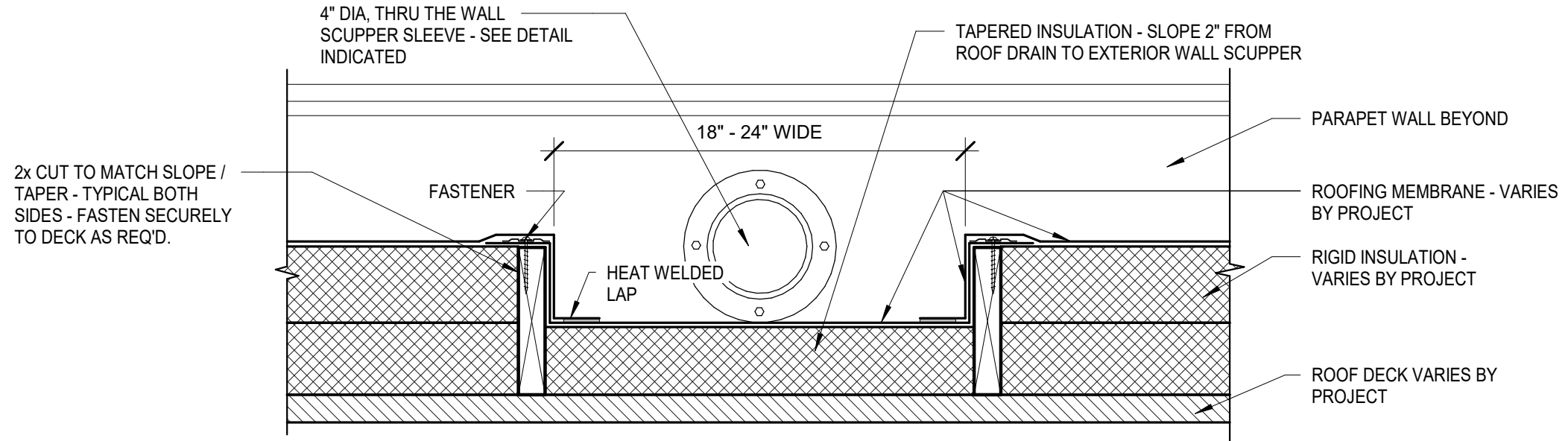
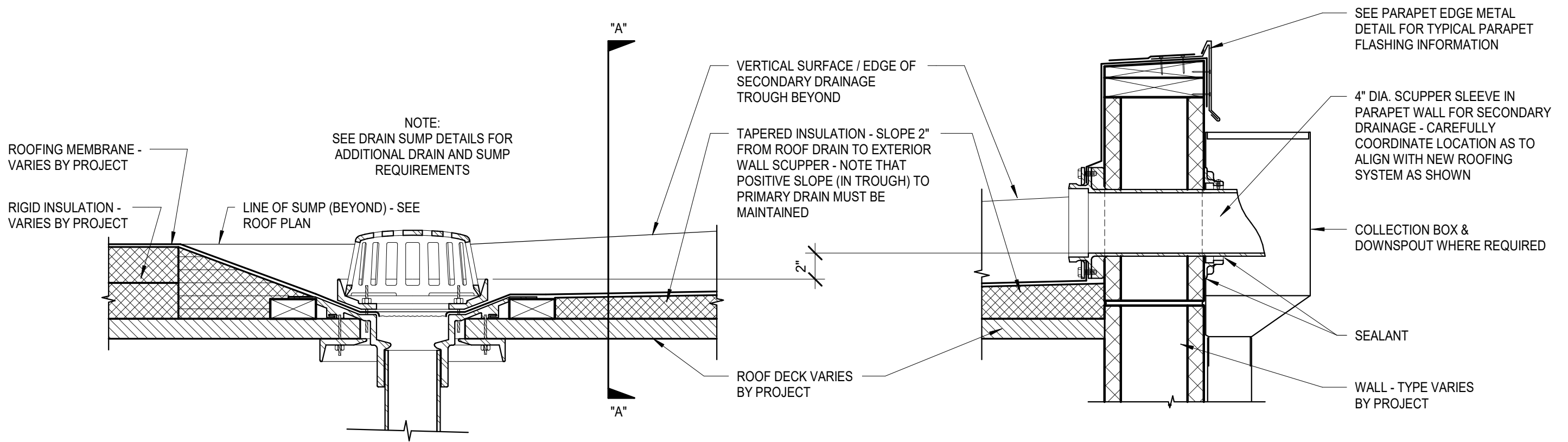


NOTE: THIS DETAIL IMPLIES THE INTENT OF A SECONDARY DRAINAGE TROUGH SYSTEM - COORDINATE, DESIGN AND INSTALL TROUGH AS REQUIRED TO ACHIEVE SECONDARY DRAINAGE - FIELD VERIFY ACTUAL CONDITIONS AND PROVIDE AN INSULATION DESIGN FOR ARCHITECTS APPROVAL PRIOR TO CONSTRUCTING THIS SYSTEM - MODIFICATION OF INSULATION / TAPER SYSTEM MAY BE NECESSARY FROM THAT DETAILED TO ACHIEVE THE INTENT OF THIS TROUGH DESIGN. - THIS DETAIL IS TO BE USED ONLY WHERE STANDARD, BELOW ROOF, SECONDARY DRAINS/PLUMBING ARE NOT POSSIBLE OR UNREASONABLE, OR WHEN PRE-APPROVED BY THE DFCM ROOFING MANAGER.



"A" - "A"



NOTE: SEE DRAIN SUMP DETAILS FOR ADDITIONAL DRAIN AND SUMP REQUIREMENTS

TAPERED INSULATION - SLOPE 2" FROM ROOF DRAIN TO EXTERIOR WALL SCUPPER - NOTE THAT POSITIVE SLOPE (IN TROUGH) TO PRIMARY DRAIN MUST BE MAINTAINED

4" DIA. SCUPPER SLEEVE IN PARAPET WALL FOR SECONDARY DRAINAGE - CAREFULLY COORDINATE LOCATION AS TO ALIGN WITH NEW ROOFING SYSTEM AS SHOWN

COLLECTION BOX & DOWNSPOUT WHERE REQUIRED

SEALANT

WALL - TYPE VARIES BY PROJECT