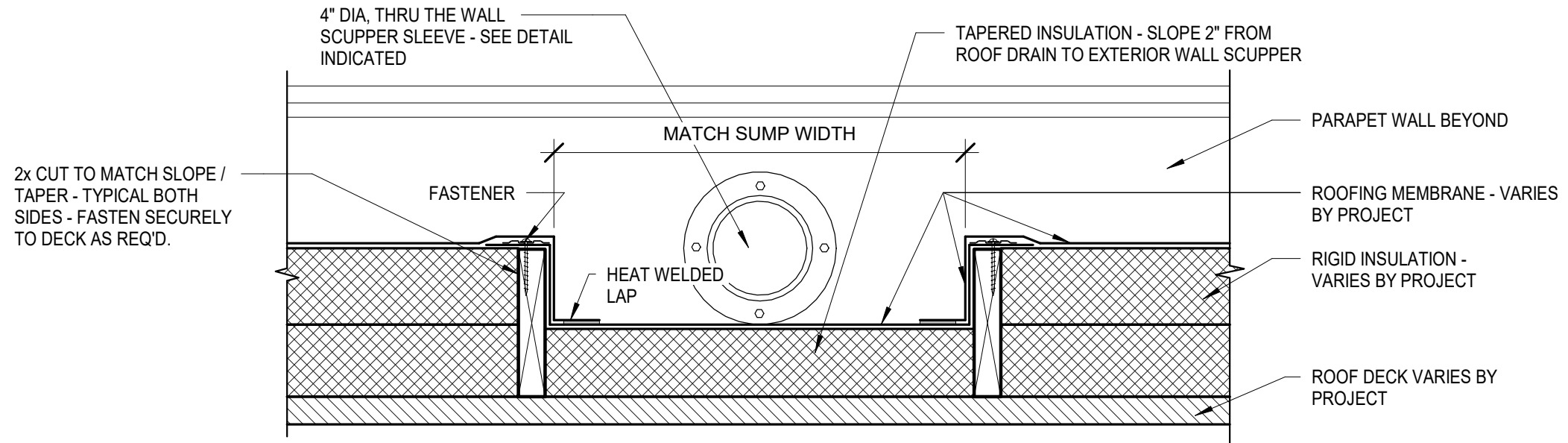
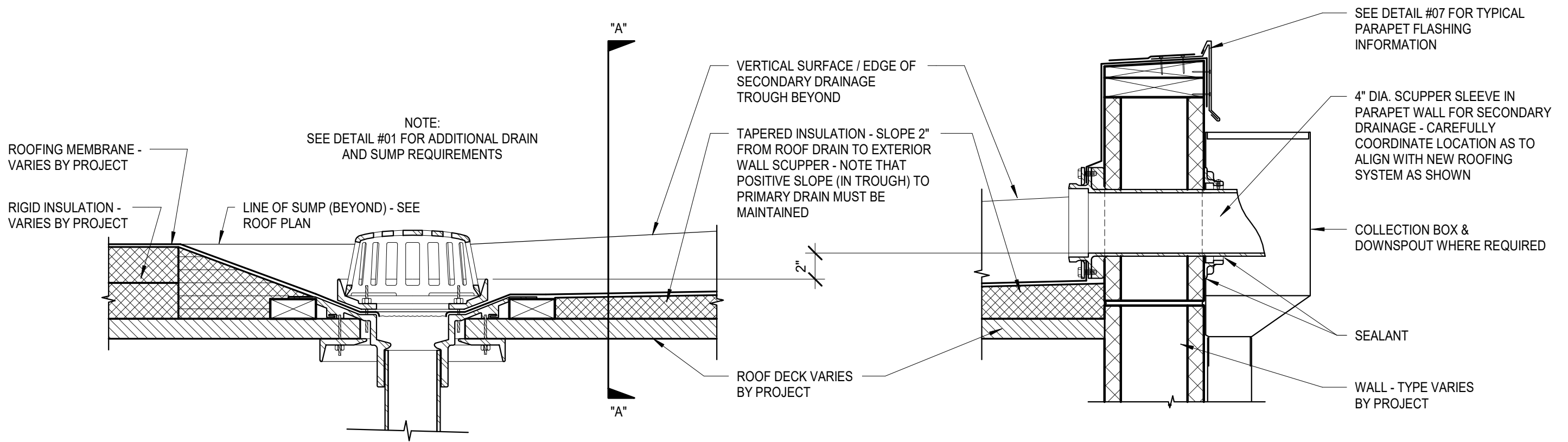


NOTE: THIS DETAIL IMPLIES THE INTENT OF A SECONDARY DRAINAGE TROUGH SYSTEM - COORDINATE, DESIGN AND INSTALL TROUGH AS REQUIRED TO ACHIEVE SECONDARY DRAINAGE - FIELD VERIFY ACTUAL CONDITIONS AND PROVIDE AN INSULATION DESIGN FOR ARCHITECTS APPROVAL PRIOR TO CONSTRUCTING THIS SYSTEM - MODIFICATION OF INSULATION / TAPER SYSTEM MAY BE NECESSARY FROM THAT DETAILED TO ACHIEVE THE INTENT OF THIS TROUGH DESIGN. - THIS DETAIL IS TO BE USED ONLY WHERE STANDARD, BELOW ROOF, SECONDARY DRAINS/PLUMBING ARE NOT POSSIBLE OR UNREASONABLE, OR WHEN PRE-APPROVED BY THE DFCM ROOFING MANAGER.



"A" - "A"



NOTE:
SEE DETAIL #01 FOR ADDITIONAL DRAIN
AND SUMP REQUIREMENTS

TAPERED INSULATION - SLOPE 2"
FROM ROOF DRAIN TO EXTERIOR
WALL SCUPPER - NOTE THAT
POSITIVE SLOPE (IN TROUGH) TO
PRIMARY DRAIN MUST BE
MAINTAINED

4" DIA. SCUPPER SLEEVE IN
PARAPET WALL FOR SECONDARY
DRAINAGE - CAREFULLY
COORDINATE LOCATION AS TO
ALIGN WITH NEW ROOFING
SYSTEM AS SHOWN