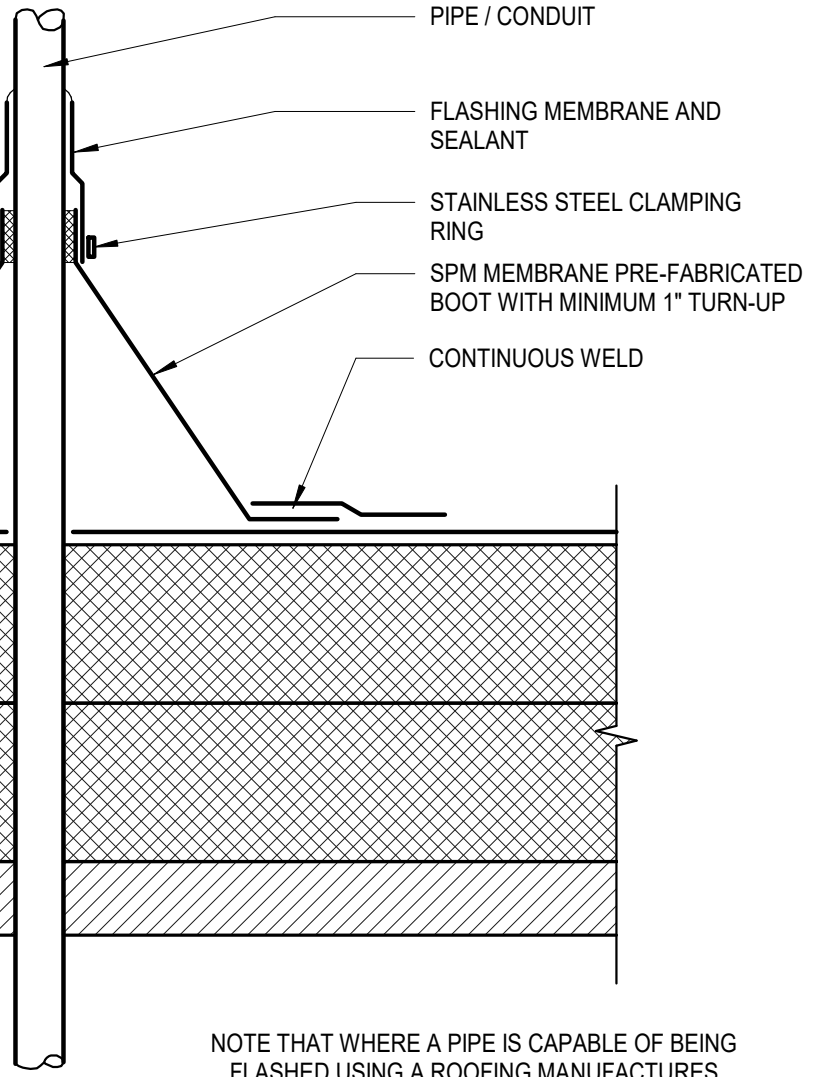


HEAT WELDED FLASHING
ROOFING MEMBRANE - VARIES BY PROJECT

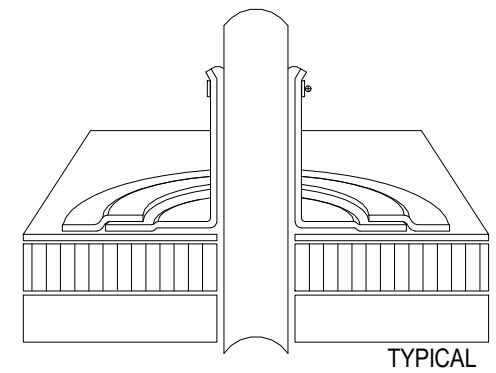
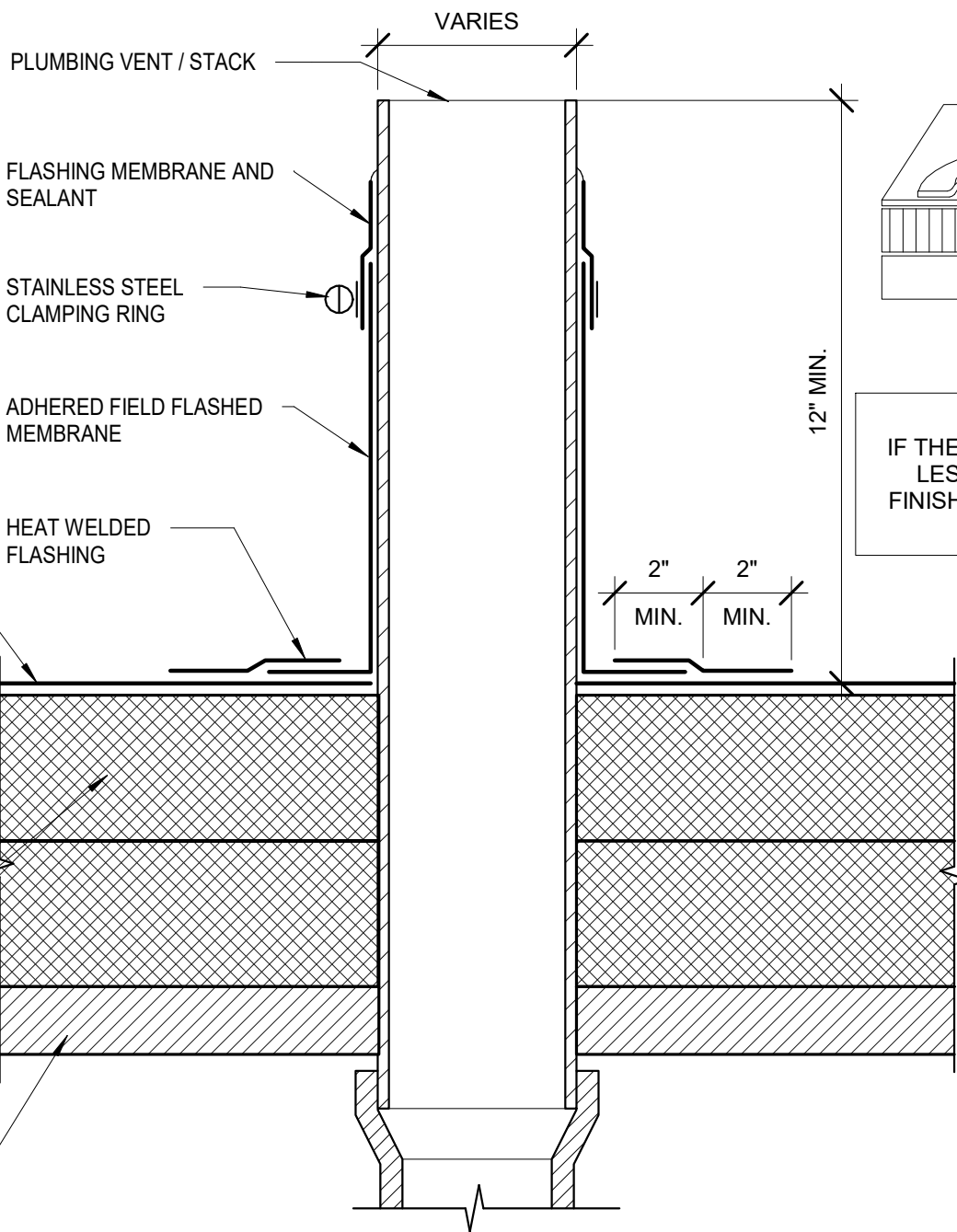
2" MIN. 2" MIN.

RIGID INSULATION - VARIES BY PROJECT

ROOF DECK VARIES BY PROJECT



NOTE THAT WHERE A PIPE IS CAPABLE OF BEING FLASHED USING A ROOFING MANUFACTURERS PRE-FABRICATED BOOT (SUCH AS SHOWN ABOVE), THAT OPTION IS REQUIRED AND SHOULD BE USED OVER A FIELD FLASHED DETAIL (SUCH AS SHOWN BELOW)



NOTE:
IF THE TOP OF THE EXISTING VENT IS LESS THAN 12" ABOVE THE NEW FINISHED ROOF SURFACE, THE VENT MUST BE EXTENDED

NOTE THAT PITCH POCKETS ARE NOT AN ACCEPTABLE METHOD OF WATER-PROOFING BASE OF PIPES