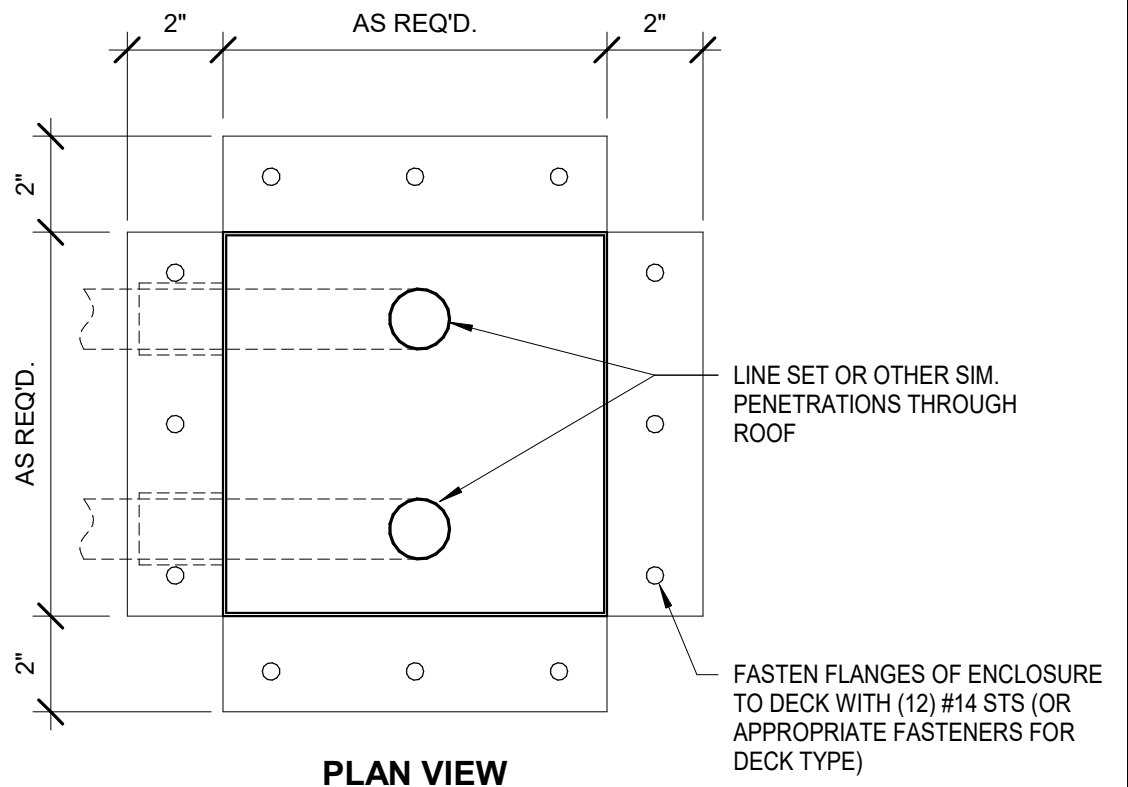
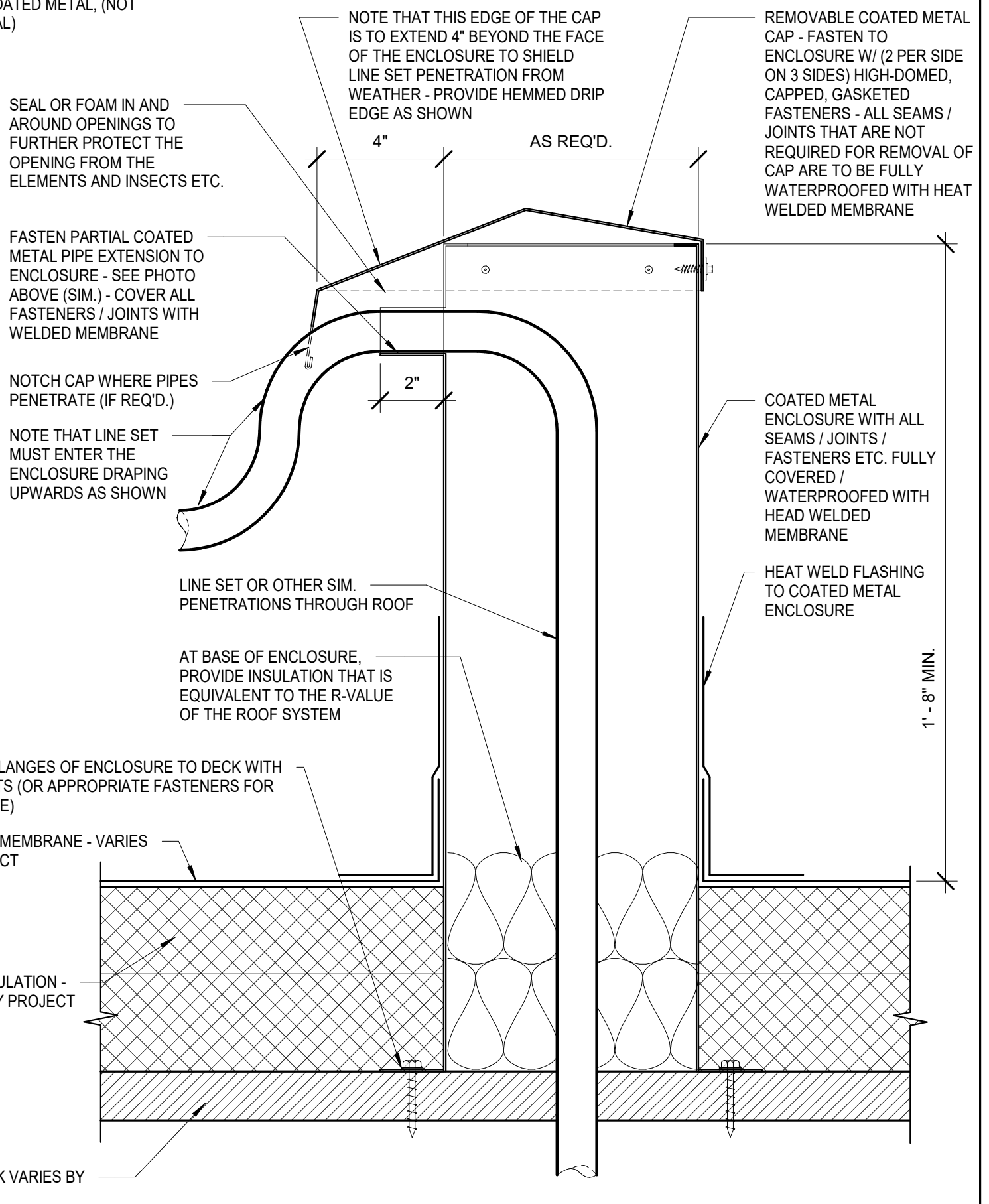




ENCLOSURE SHOWN IN PHOTO FOR REFERENCE ONLY - NOTE THAT ALL METAL MUST BE COATED METAL, (NOT GALVANIZED METAL)



PLAN VIEW



NOTE (TYPICAL): LOCATE NEW LINE SET ENCLOSURES A MINIMUM OF 18" AWAY FROM THE UNIT BEING SERVED

NOTE (TYPICAL): ALL EXISTING LINE SETS MUST BE REPLACED WITH NEW - PROVIDE ADDITIONAL LENGTH OF LINE SET AS REQ'D. TO PROPERLY WORK WITH NEW ENCLOSURE

NOTE THAT PITCH POCKETS ARE NOT AN ACCEPTABLE METHOD OF WATER-PROOFING BASE OF PIPES