

HEAT WELDED FLASHING
ROOFING MEMBRANE - VARIES BY PROJECT

2" MIN. 2" MIN.

RIGID INSULATION - VARIES BY PROJECT

ROOF DECK VARIES BY PROJECT

PIPE / CONDUIT

FLASHING MEMBRANE AND SEALANT

STAINLESS STEEL CLAMPING RING

SPM MEMBRANE PRE-FABRICATED BOOT WITH MINIMUM 1" TURN-UP

CONTINUOUS WELD

NOTE THAT WHERE A PIPE IS CAPABLE OF BEING FLASHED USING A ROOFING MANUFACTURERS PRE-FABRICATED BOOT (SUCH AS SHOWN ABOVE), THAT OPTION IS REQUIRED AND SHOULD BE USED OVER A FIELD FLASHED DETAIL (SUCH AS SHOWN BELOW)

PLUMBING VENT / STACK VARIES

FLASHING MEMBRANE AND SEALANT

STAINLESS STEEL CLAMPING RING

ADHERED FIELD FLASHED MEMBRANE

HEAT WELDED FLASHING

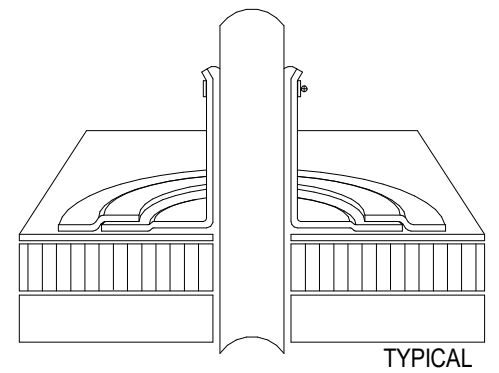
ROOFING MEMBRANE - VARIES BY PROJECT

RIGID INSULATION - VARIES BY PROJECT

ROOF DECK VARIES BY PROJECT

12" MIN.

2" MIN. 2" MIN.



NOTE:
IF THE TOP OF THE EXISTING VENT IS LESS THAN 12" ABOVE THE NEW FINISHED ROOF SURFACE, THE VENT MUST BE EXTENDED

NOTE THAT PITCH POCKETS ARE NOT AN ACCEPTABLE METHOD OF WATER-PROOFING BASE OF PIPES